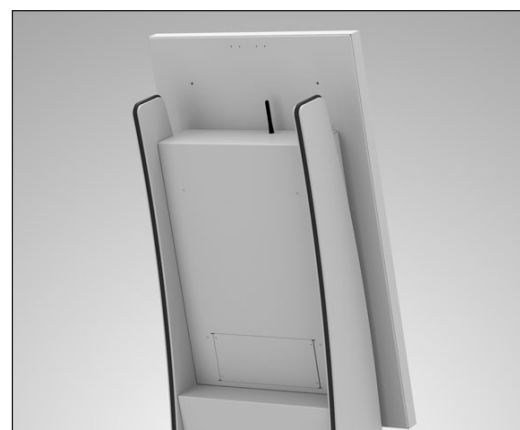


polytouch® curve 32"



HIGHLIGHTS

- Helps increasing safety for staff, suppliers, visitors and members of the public
- Offers buildings access control applications
- Maintenance-friendly integrated devices
- Enables seamless check-in process with option for card dispenser with RFID reader and label printer
- Full HD display (1920 x 1080)



polytouch® curve 32" (upper position) rear view with WiFi-antenna and black inlays

OVERVIEW

VISITOR MANAGEMENT

Security	Biometric access 3D camera facial recognition Verified identity ID verification through border control passport scanner and database
Convenience	Pre-Registration Professional email invitation with preregistration option Analytics Real-time security monitoring

TEMPERATURE SCAN

User Interface	Contactless operation
Throughput	Up to 700 persons per hour
Sensor-IR	· Reproducibility $\pm 0.3^{\circ}\text{C}$
Thermal Array	· 1024 pixel infrared array · Measuring range 0 to 100°C
LED indication	Scale with 8 x LED for temperature indication

Pictures show sample configurations, real product may vary.

polytouch® curve 32"

OVERVIEW

DISPLAY	Screen size	82 cm (32")	
	Resolution	1920 x 1080 (Full HD)	
	Brightness	500 cd/m ²	
	Contrast	3000 : 1	
	Viewing angle	178° h/v	
	Bonding	Optical bonding	
	Coating	Glare/Anti-Glare	
	Display orientation	Portrait and landscape	
TOUCHSENSOR	Connector	HDMI, DVI, VGA, LVDS	
	Touch technology	Projected Capacitive Touch (PCT)	
CHASSIS	Simultaneous touches	10 touches	
	Material	Stainless steel, powder coated	
	Dimensions (H x W x D)	791 x 486 x 78 mm/31.14 x 19.13 x 3.07 in	
	Weight	Display only	approx. 22 kg
		PC Box	approx. 5 kg
		Display + PC-Box + VESA standard (=Wallmount) ...	approx. 32/42 kg (net/gross)
Mounting	Pedestal, VESA standard 300 x 300, Wallmount		
Frame colours/material	RAL 9005 (black) DEFAULT , RAL 9010 (white), RAL customer specific, Real wood		
COMPUTER UNIT (PC-BOX)	Processor	Intel® Core™ i3/i5/i7 Skylake	
	Chipset	Intel® Q170 Chipset	
	Graphics	Intel® HD530 Graphics	
	Memory	up to 16 GB	
	Storage	up to 256 GB	
	LAN	2 x 1GbE LAN, WiFi-antenna	
	OS	Windows 10 (32/64 Bit), Ubuntu Linux, Android	
Interfaces	1 x DC-out, 4 x USB 2.0, 4 x USB 3.0, 2 x COM, 2 x RJ45, 1 x DisplayPort		



Pictures show sample configurations, real product may vary.

polytouch® curve 32"

OVERVIEW

POWER (INCL. PC-BOX)	Power supply	Internal, max. 350 W, active cooling		
	Power input	max. 272 W		
	Input voltage	100-240 V AC, 50-60 Hz		
POWER (DISPLAY ONLY)	Power input	max. 45 W		
	Input voltage	24 V		
PEDESTAL	Material	Steel, powdercoated		
	Dimensions (H x W x D)	1730 x 780 x 500 mm/68.11 x 30.71 x 19.69 in (upper position) 1650 x 780 x 500 mm/64.96 x 30.71 x 19.69 in (lower position) 1450 x 485 x 275 mm/57.09 x 19.09 x 10.83 in (Wallmount)		
	System weight	Approx. 110 kg (pedestal + display), approx. 80 kg (pedestal only)		
	Mounting	Stand-alone, Freestanding, Wallmount		
	Colour	RAL 9005 (black) DEFAULT , RAL 9010 (white), RAL customer specific		
	Inlay colour	RAL 9010 (white) DEFAULT , RAL 9005 (black), RAL customer specific, Real wood, RGB LED (16 million colours)		
	Display angle	20°		
OPTIONAL COMPONENTS	Printer	80 mm/3.15 in thermal printer 60 mm/2.36 in thermal printer 80 mm/3.15 in roll diameter	e.g. Nippon NP-K3510A-2 (others on request)	
	Scanner/Imager	1D/2D Barcode/QR-code scanner Passport scanner	e.g. Honeywell N5680SR (others on request) e.g. Desko Penta Cube (others on request)	
	Payment module		e.g. Ingenico iPP480 (others on request)	
	Cashbox	Note recycler		Storage for 500 notes
		Coin recycler		1500 pcs. (1 €) coin storage (other currencies on request)
	Card dispenser		e.g. Quio CRT-571 (others on request)	
	Card printer		e.g. Zebra ZC100 (others on request)	
	Audio Nav Keypad		e.g. StormATP AudioNav (others on request)	
	RFID/NFC		e.g. IDTronic OEM-HF-R830-USB (others on request)	
	Camera		e.g. Intel® RealSense D415 (others on request)	
	Proximity sensor		e.g. Maxbotix MB1413 HRUSB-MaxSonar-EZ1	
	Industrial Stainless Steel Keyboard			
	Microphone			
	Line-Out			
	USB			
	Scanner or bag shelf			
	Bumper			
Customer specific printing or labeling (area on request)				
CERTIFICATIONS	CE, further certifications on request			

ds_pt32_curve_Fever_Scan_EN · 10.08.21 · specification is subject to change